

Local Resilience Forum

“The Civil Contingencies Act (CCA) and Regulations provide responders, through the Forum, have a collective responsibility to plan, prepare and communicate in a multi-agency environment.”



West Midlands Prepared
[@WMidsPrepared](https://twitter.com/WMidsPrepared)

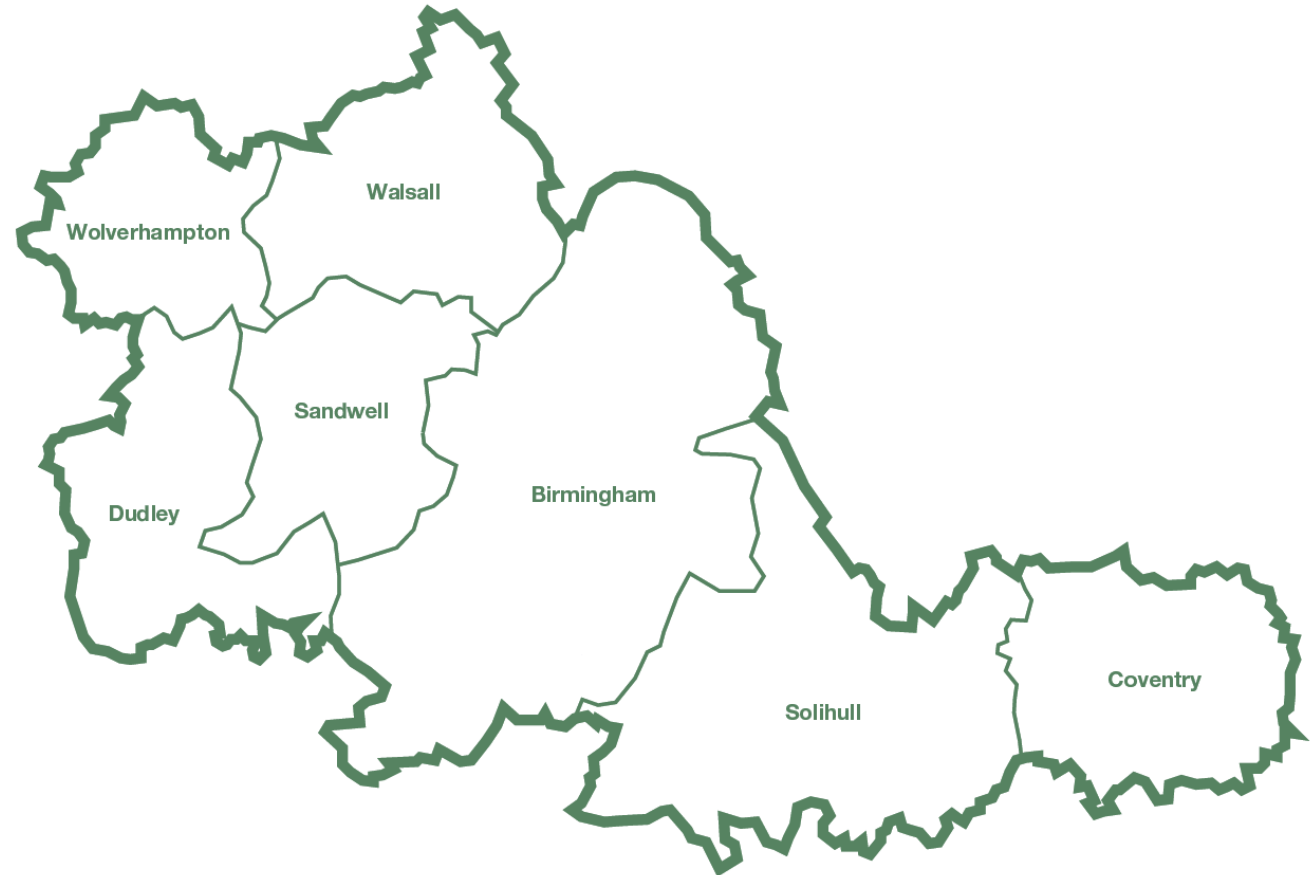
Luke Martin
LRF Tactical Officer

lrf_coordinator@west-midlands.pnn.police.uk



Geographical Footprint

- All LRFs cover an area which aligns to Police Force areas of responsibility.
- Some partners within the West Midlands Conurbation LRF work across other LRF areas.
- The West Midlands covers a population of 2,665,000 with 6 major urban conurbations and 7 local authorities.



Category 1 Responder

Emergency Services

- British Transport Police
- West Midlands Ambulance Service
- West Midlands Fire Service
- West Midlands Police

Local Authorities

- Birmingham City Council
- Coventry City Council
- Dudley Metropolitan Borough Council
- Sandwell Metropolitan Borough Council
- Solihull Metropolitan Borough Council
- Walsall Metropolitan Borough Council
- Wolverhampton City Council

Health Bodies

- UK Health Security Agency
- NHS England
- Birmingham & Solihull Integrated Care Board
- Black Country Integrated Care Board
- Coventry & Warwickshire Integrated Care Board

Government Agencies

- Environment Agency

Category 2 Responder

Utilities

- Electricity Distributors and Transmitters
- Gas Distributors
- Telephone Service Providers (fixed and mobile)
- Water and Sewerage Undertakers

Transport

- Birmingham International Airport
- Bus and Coach Operators
- National Highways
- Transport for West Midlands
- Train Operating Companies (passenger and freight)

Government Agencies

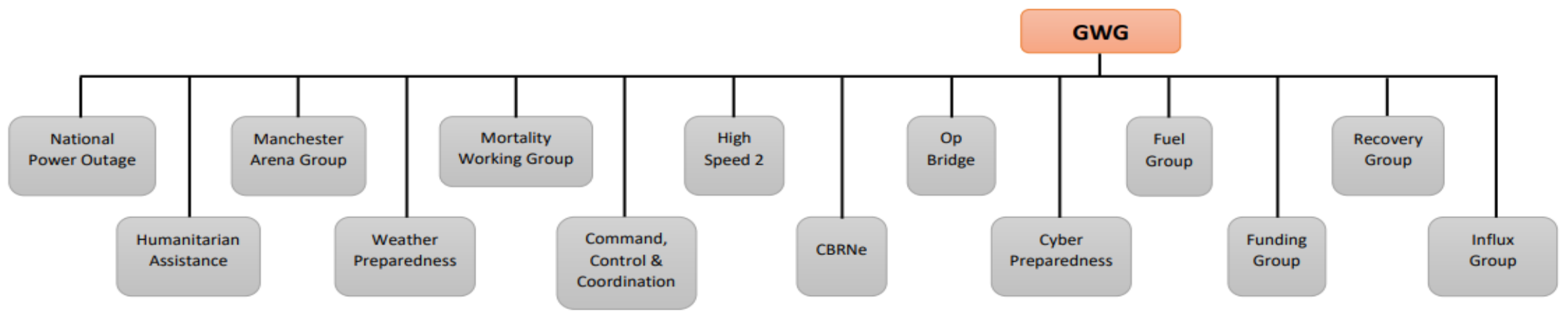
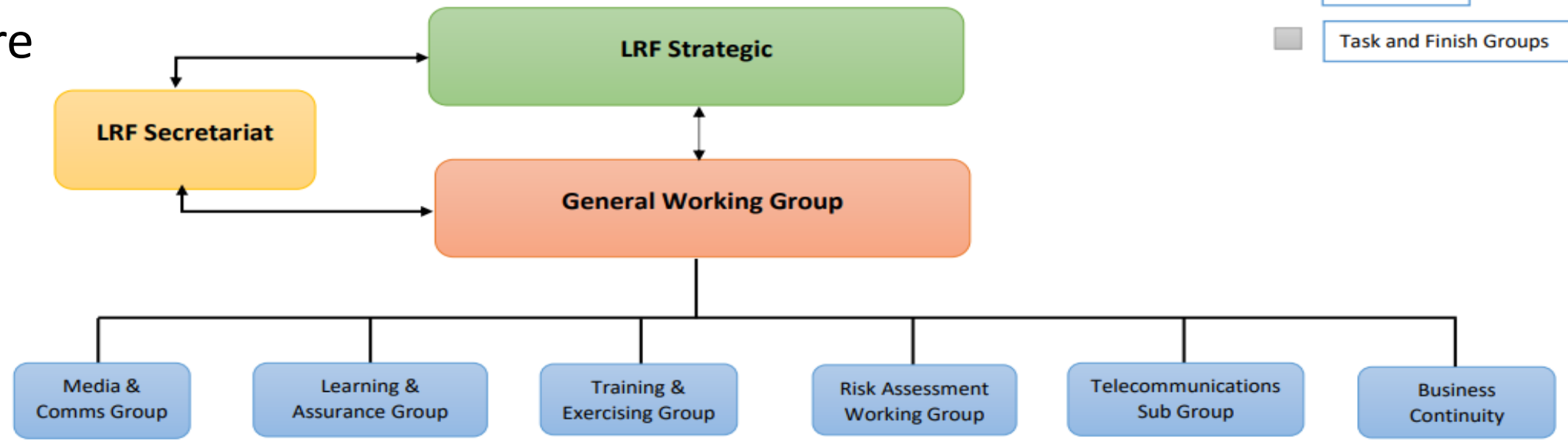
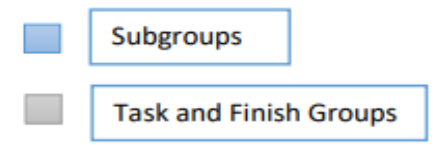
- Health and Safety Executive
- DEFRA
- Met Office
- Animal Plant Health Agency (APHA)
- Coal Authority

Supporting Responders

- Ministry of Defence
- Government Departments
- Voluntary Sector

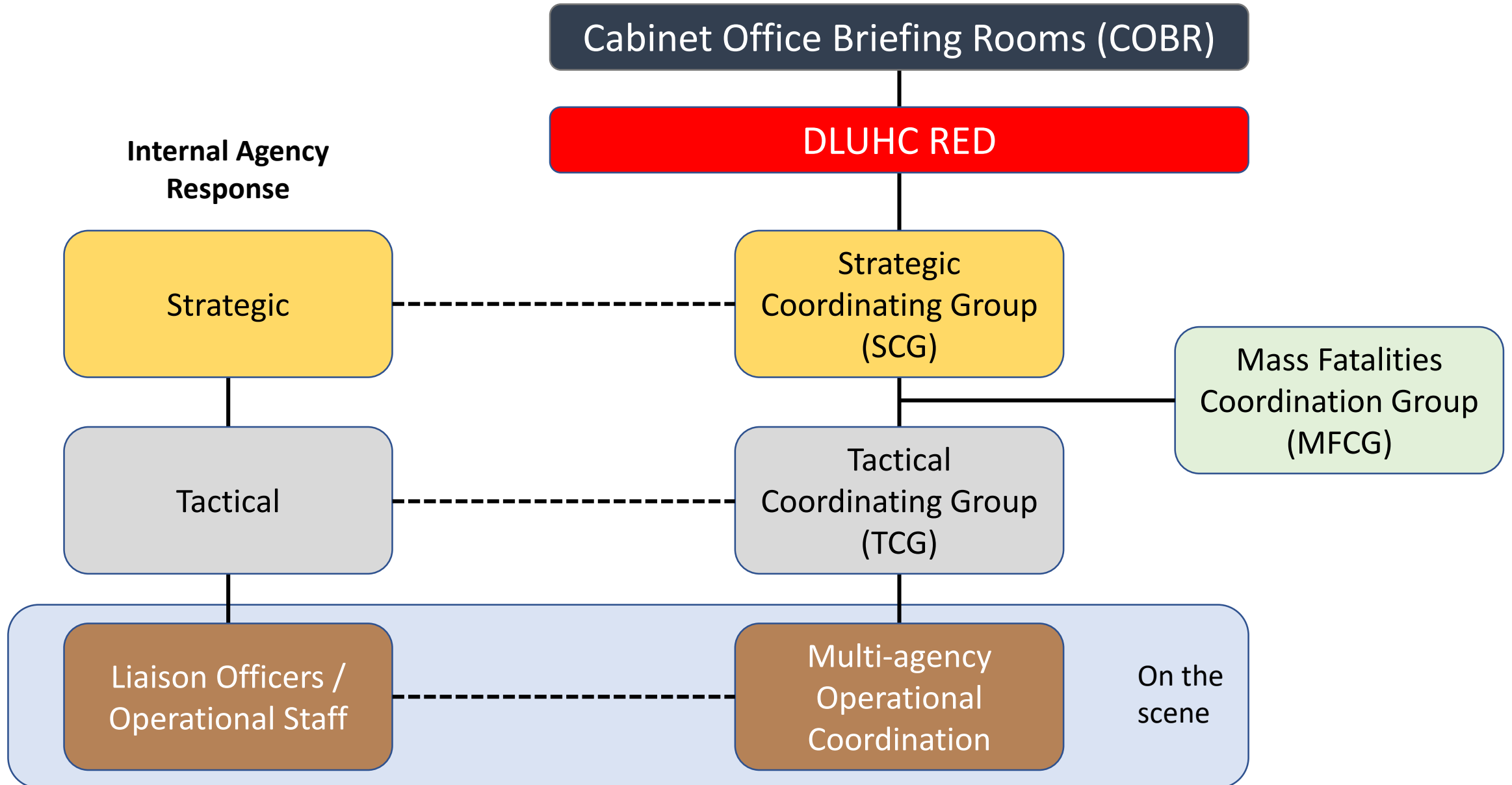


WMC LRF Structure



There are two regional (WMC, West Mercia, Staffs, and Warks LRF) groups that the GWG will both support and feed information to.
These are:
High Speed 2; and Mass Fatalities

Incident Response Structure



Activation of a Strategic/Tactical Coordination Group

- Any Agency can activate an SCG / TCG
- SCGs and TCGs are not just about 'Major Incidents', it is about declaring an emergency
- SCGs and TCGs ensure a collaborative and coordinated approach when responding to emergencies
- Activations within WMC will be using a 'right time, right place, right people' approach;
 - Not all partners will receive primary notification of the incident, or be required to attend the SCG / TCG – attendance is incident dependent.
 - **All** partners will receive relevant papers from the response, ensuring shared situational awareness and understanding
- The organisation that takes 'primacy' of an incident will usually Chair the SCG / TCG
- Typically, at the first instance, WMP will Chair the first meeting
- Administrative support will be agreed at the first meeting



Wild Fires in the West Midlands



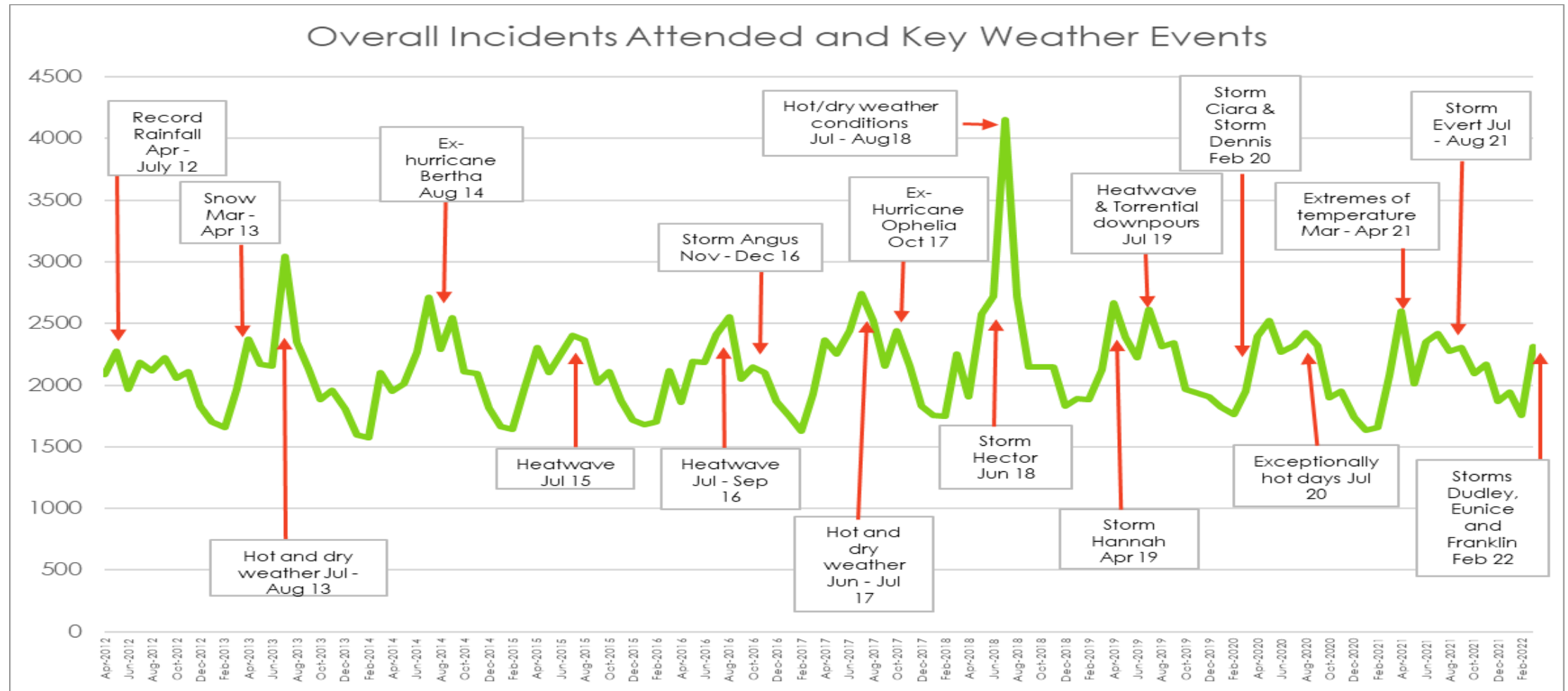
Images provided by the West Midlands Fire Service

Flooding in the West Midlands



Images provided by the West Midlands Fire Service

West Midlands Fire Service – Incidents Tagged ‘Weather’



Information provided by the West Midlands Fire Service

The map to the left shows the high-risk flooding areas (blue) and the hotspot areas for flooding incidents (red)

There are five high-risk areas:

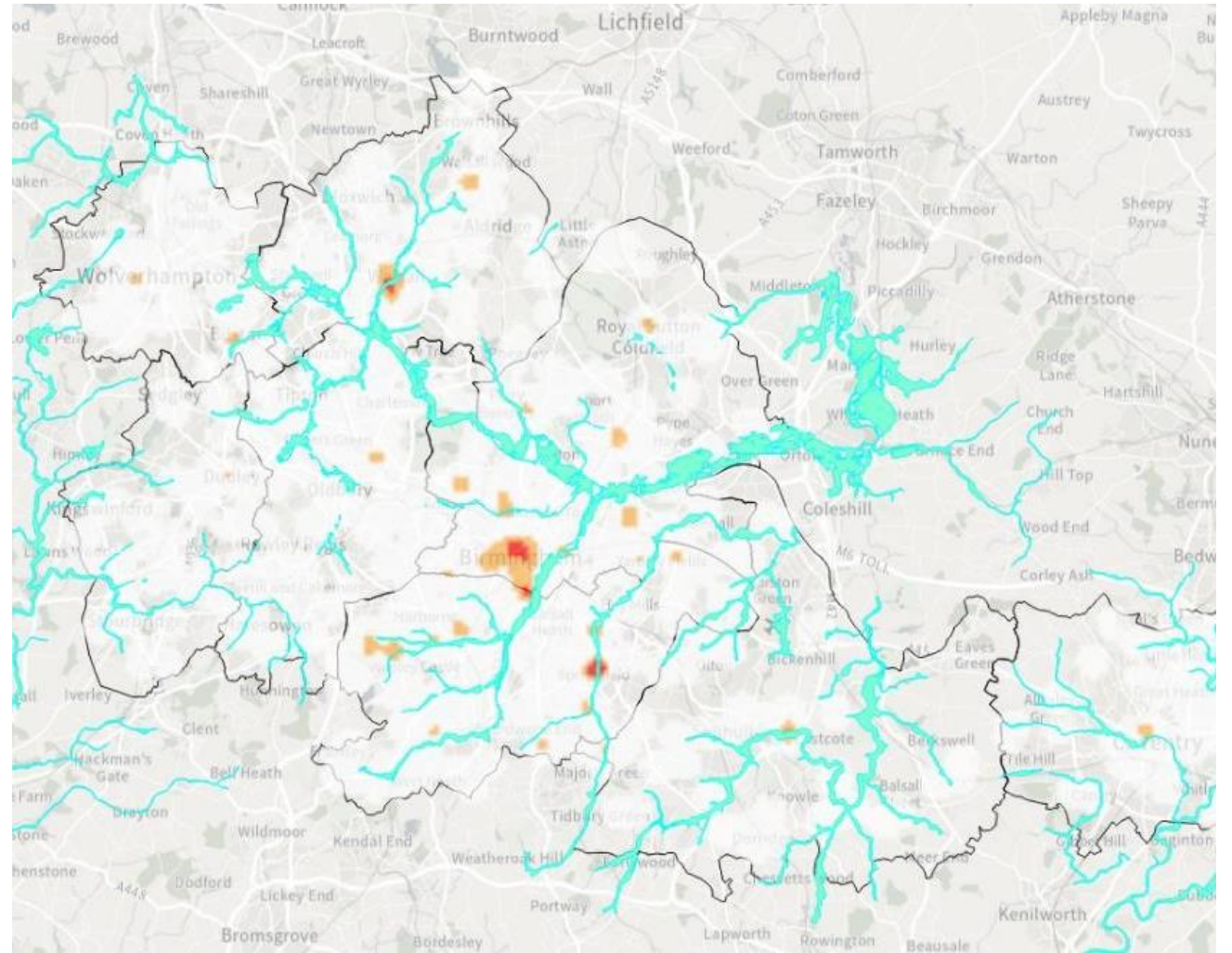
Birmingham City centre

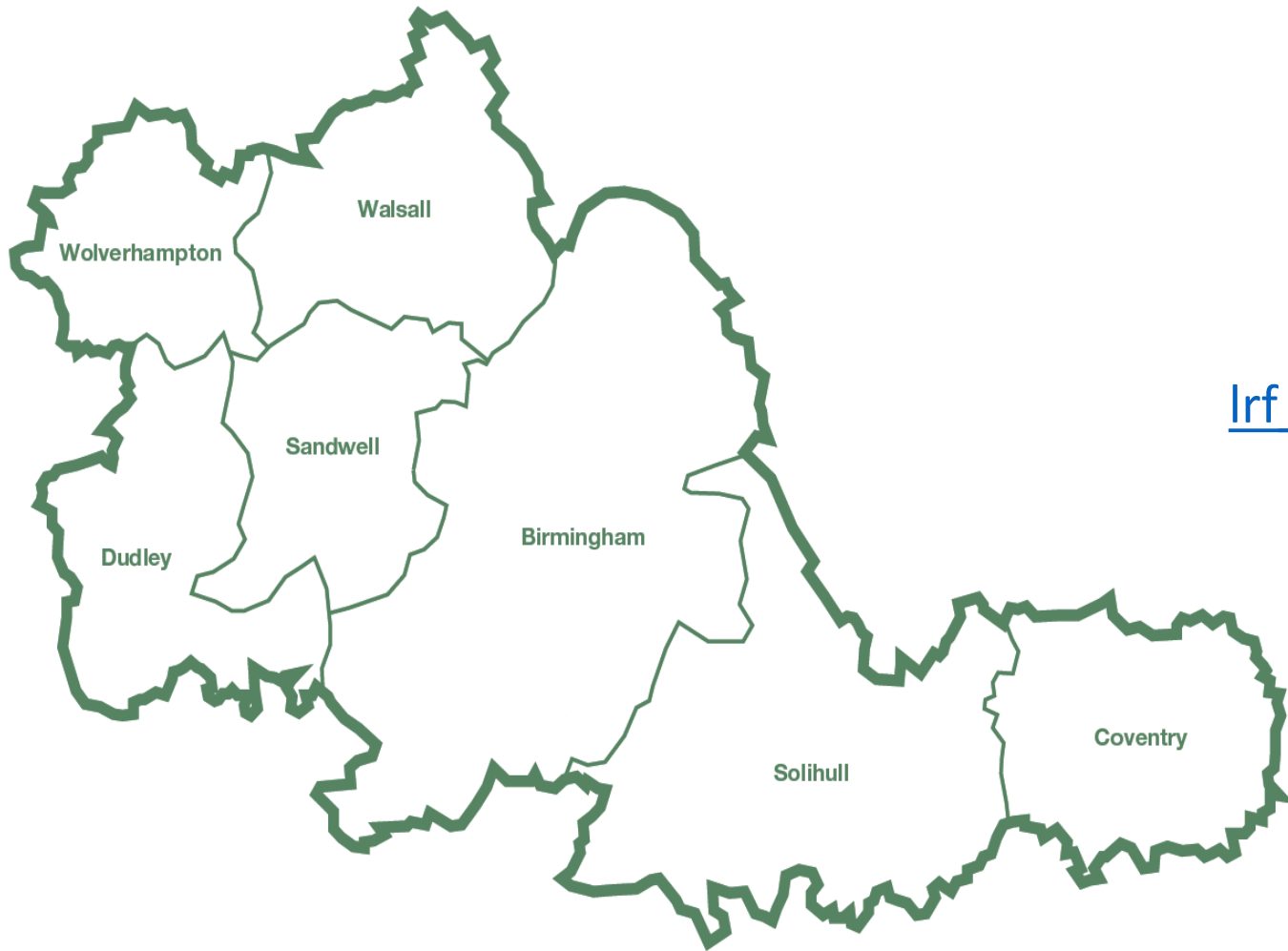
Highgate Birmingham

Springfield Birmingham

Walsall Town centre

Henwood Mill Solihull





Luke Martin LRF Tactical Officer

March 2024– v2.0

lrf_coordinator@westmidlands.police.uk



West Midlands Prepared
@WMidsPrepared

