



# Welcome to Energy Capital's Spring Event



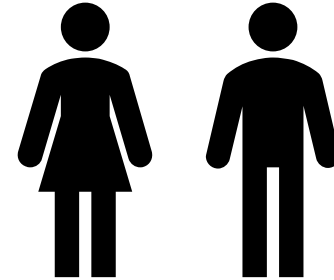
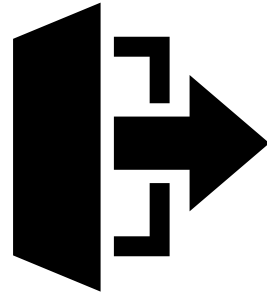
West Midlands  
Combined Authority

**ENERGYCAPITAL**

---

WEST MIDLANDS  
Greener Together 

# Housekeeping



# Today's aims and agenda

Energy Capital runs a series of events over the course of the year:

- Monthly co-working Collaboration Days across the West Midlands
- Workstream specific engagement
- Our Autumn Partnership Conference, showcasing the great work of partners across the region – sponsorship opportunities available!
- This Spring Event, setting out Energy Capital's work programme for the coming year and how you can get involved

Time	Session		
09:30	Welcome		
09:45	Overview of Energy Capital's work		
10:50	Coffee Break		
11:20	Policy session		
12:15	Lunch		
	Deep Dive Sessions		
13:15	Devolved Retrofit Pilot	Place-based Net Zero	Energy Infrastructure
15:15	Networking and refreshments		

# Opening Address

## Positioning to Deliver our Regional Energy Strategy

Cheryl Hiles  
Director – Energy Capital



West Midlands  
Combined Authority



WEST MIDLANDS  
Greener Together



Energy Capital's vision is for a just energy transition, where investment is appropriately channelled to meet the needs of our diverse communities, enable timely decarbonisation and create a thriving market for clean-tech innovation and economic growth



# Mission focused Government

Government's mission is to make Britain a clean energy superpower, harnessing home-grown energy to achieve a clean power system by 2030

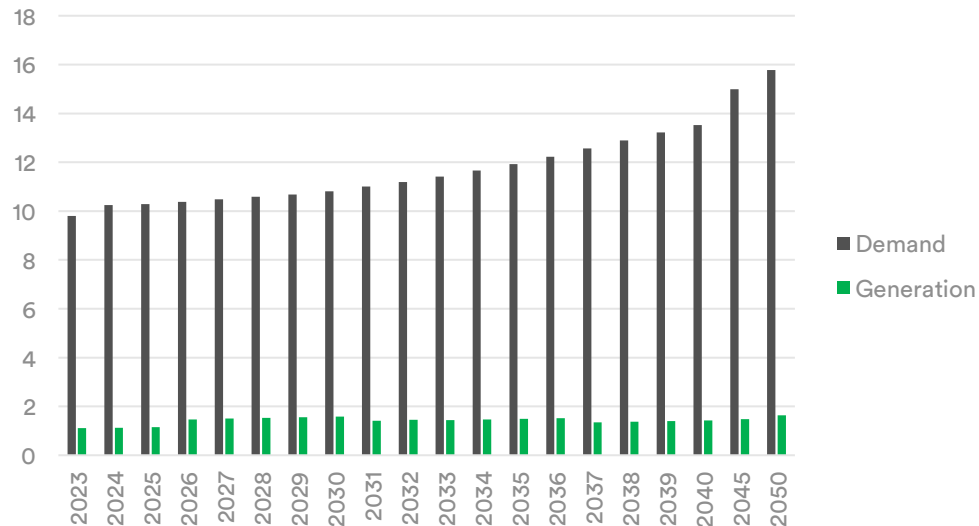


# Energy Capital

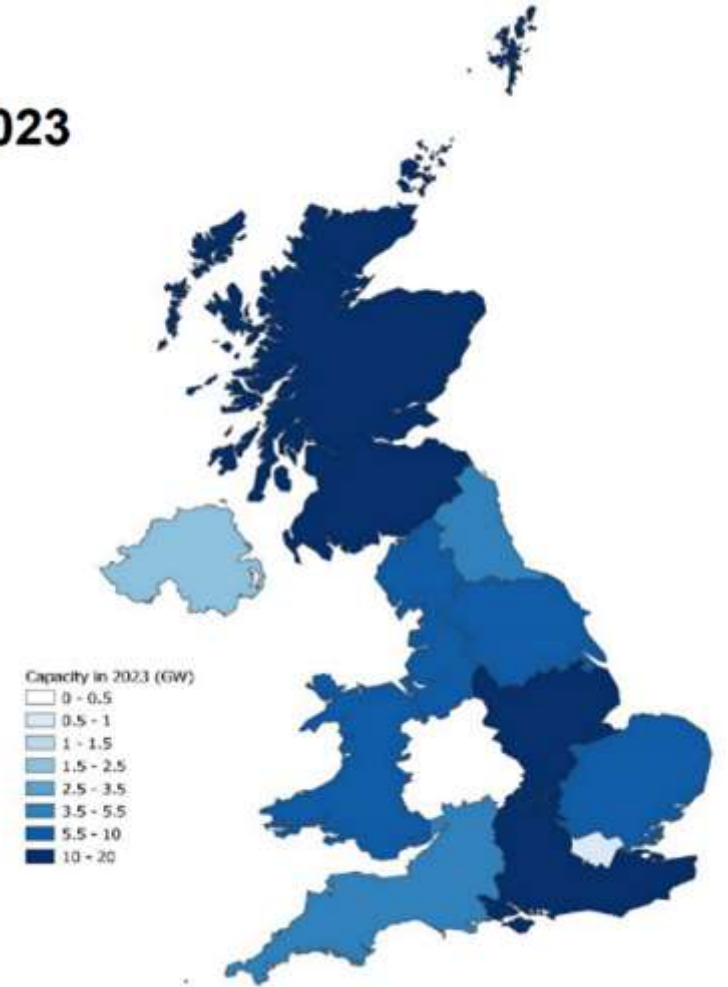
What do we have to offer?

- The West Midlands doesn't have the large-scale opportunities that coastal regions do (offshore wind, hydrogen, carbon capture and storage).

National Grid projected total annual energy consumption (TWh) for the WMCA region.



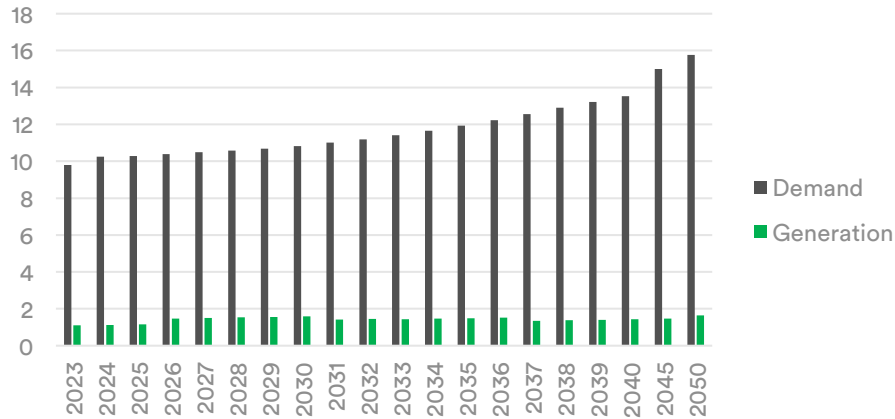
2023



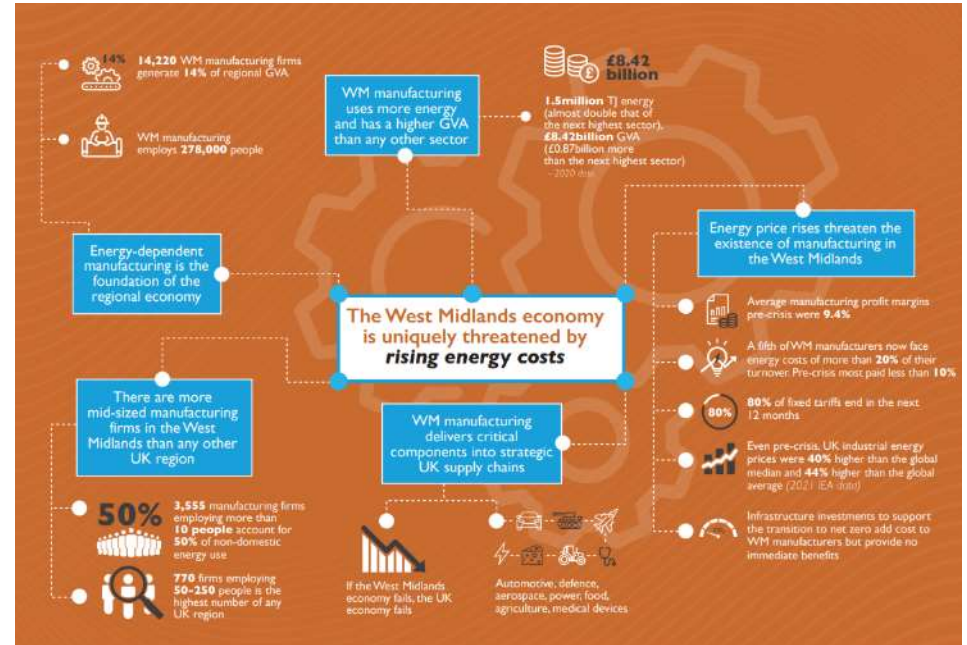
# Energy Capital

## Our assets

- The West Midlands is a large centre of energy demand (densely populated urban region plus significant manufacturing base) which is projected to grow further.



National Grid projected total annual energy consumption (TWh) for the WMCA region. Generation refers to renewables connected to the distribution network, excluding larger connections to the transmission grid



“In 2023, energy bills for West Midlands businesses totaled somewhere in excess of £4.4bn, of which 52% was spent by industrial firms and 48% by the services sector. This figure represents over 4% of regional GVA, and has more than doubled since 2021, effectively reducing regional output by 2% and handicapping efforts of the West Midlands to compete globally, grow, and deliver a sustainable, healthy society for its people.”

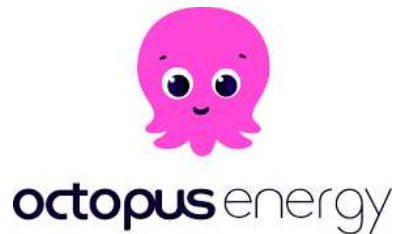
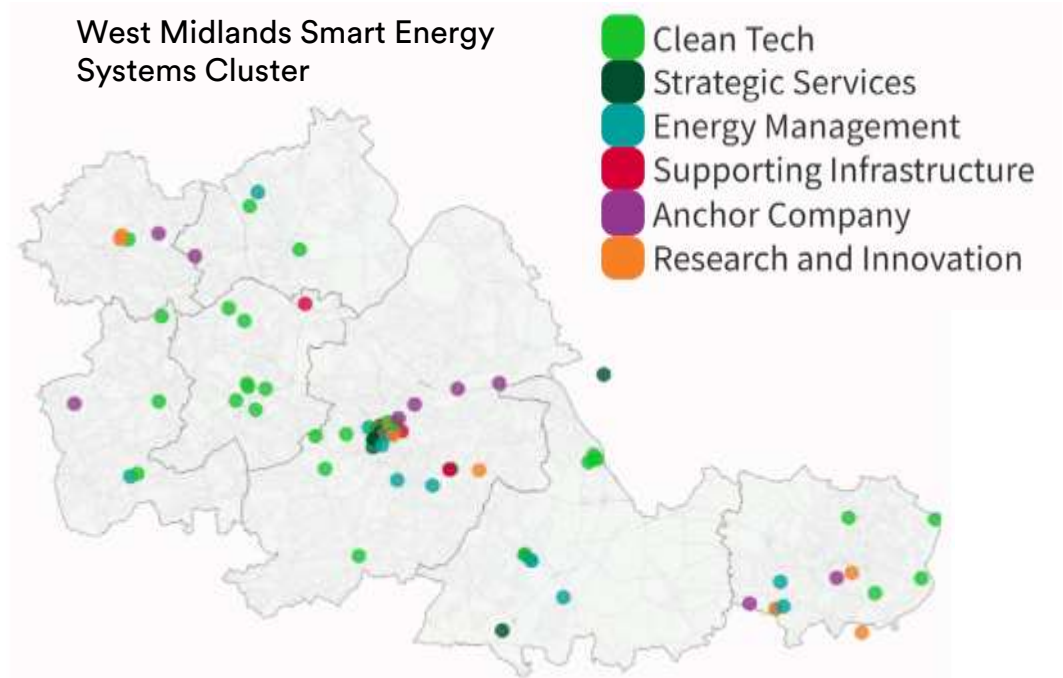
[WM Industrial Energy Taskforce, Powering Growth in a Changing World, 2024](#)



# Energy Capital

The West Midlands has good expertise in smart energy systems and has set up a smart energy systems cluster as part of the Plan for Growth – with smart energy as a key priority sector.

Energy Capital, Energy Systems Catapult, National Grid, Hitachi Energy, Universities (inc. spinouts such as Grid Edge), Octopus, SSE Solutions etc.



# Regional Energy Strategy

The Energy Capital Partnership has developed a refreshed West Midlands Regional Energy Strategy that positions the West Midlands as the region best placed to champion smart energy.

## Vision

By 2041, the West Midlands will have trailblazed the route to a smarter UK energy system, creating prosperity for the region and enabling a fairer net zero transition for our communities.

Four aims of the strategy:

- Ensure the energy transition meets the region's net zero obligations
- Ensure the energy transition is affordable
- Ensure the energy transition is fair and just
- Ensure the energy transition provides opportunities for investment
- Five strategic pillars identified to set the region's priorities

# West Midlands Regional Energy Strategy

By 2041,  
the West Midlands  
will have trailblazed the route to a smarter UK energy system,  
creating prosperity for the region and enabling a fairer net zero transition for our communities

Smart  
Spatial  
Planning

Local  
Flexibility

Co-located  
Clean  
Generation

Skilled  
Workforce  
and Supply  
Chain

Commercial  
and Financial  
Innovation

Policy foundation

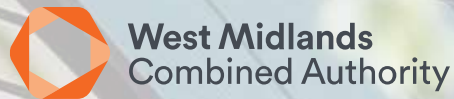
# Regional Energy Strategy: 5 Pillars

1. **Smart spatial planning** – ensuring that energy system planning is joined up with transport and spatial planning to enable the region to achieve its clean growth objectives. *(Supported by Project PRIDE to deliver smart local area energy plans across the region, funded by OfGEM)*
2. **Local flexibility** – a smarter energy system requires technologies that enable energy generation and demand to be balanced more effectively. This strategy sets out how the benefits of flexibility can be retained locally to support the decarbonisation of our built environment and transport systems. *(Government will be setting out more detail on this in 2025 which will shape how we resource this)*
3. **Co-located clean generation** – ensuring that renewable energy generation can increase within the West Midlands, by locating it close to demand, to avoid putting pressure on the electricity network. (Supported by the new role of GB Energy and their £8bn of potential investment)
4. **Skilled workforce and supply chain** – ensuring that the West Midlands is recognised as a hub of energy systems expertise, playing its part to make the entire UK energy system smarter, and growing sustainable demand for local supply chains to develop, integrated with skills and training offers. (Supported by the region's Smart Energy System Cluster and our Devolved Retrofit Pilot)
5. **Commercial and financial innovation** – directing the region's innovation efforts towards creating business models and finance products that help to overcome barriers and accelerate the delivery of smart energy systems. (Supported by the region's Investment Programme, our Local Net Zero Accelerator funded by DESNZ and National Wealth Fund).



# Ensuring Energy Infrastructure Investment Enables Our Green Growth Objectives

Kate Ashworth, Head of Energy Infrastructure



**ENERGYCAPITAL**



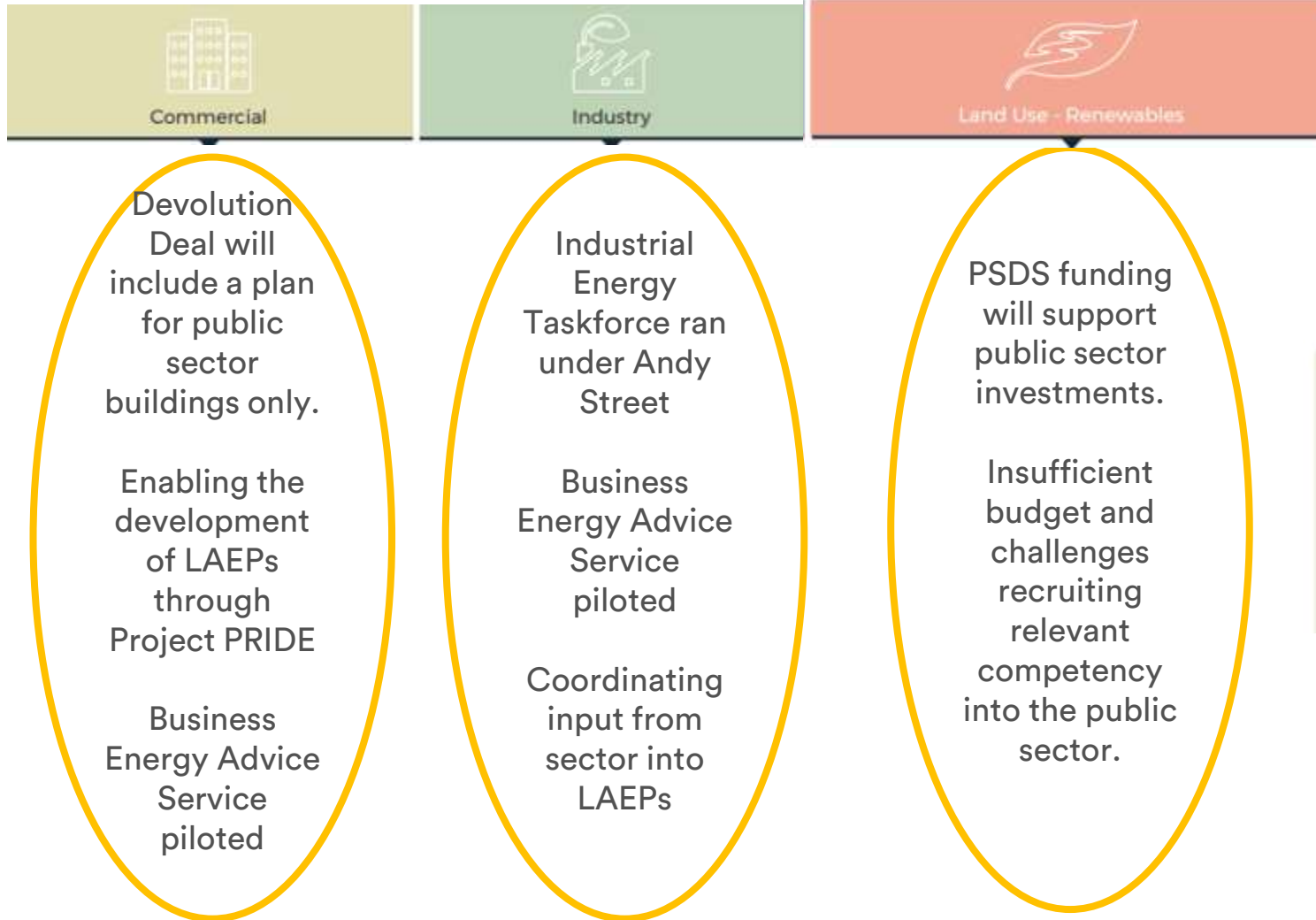


# Energy infrastructure underpins our economy



West Midlands  
Combined Authority

**ENERGY**  
**CAPITAL**

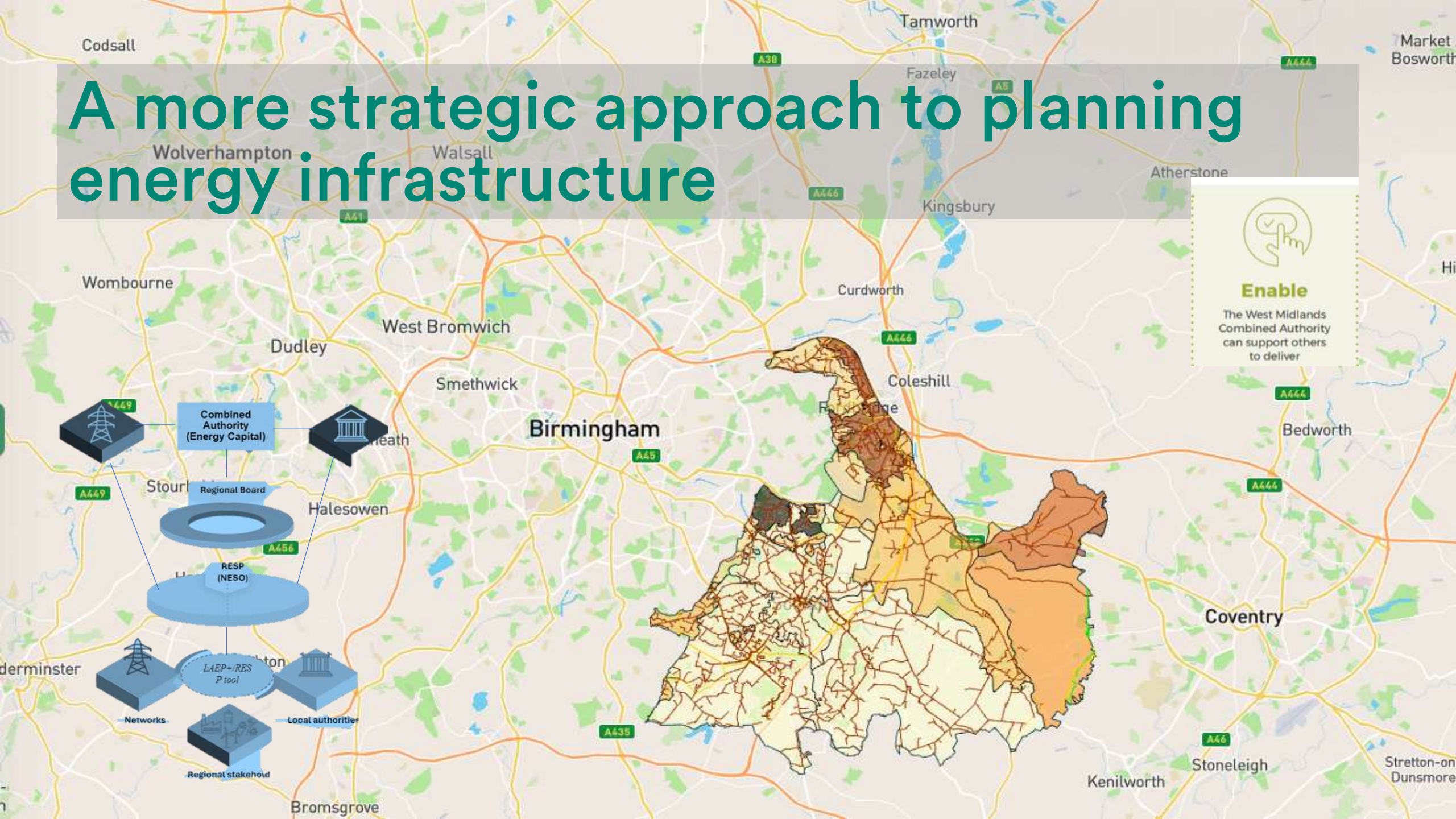
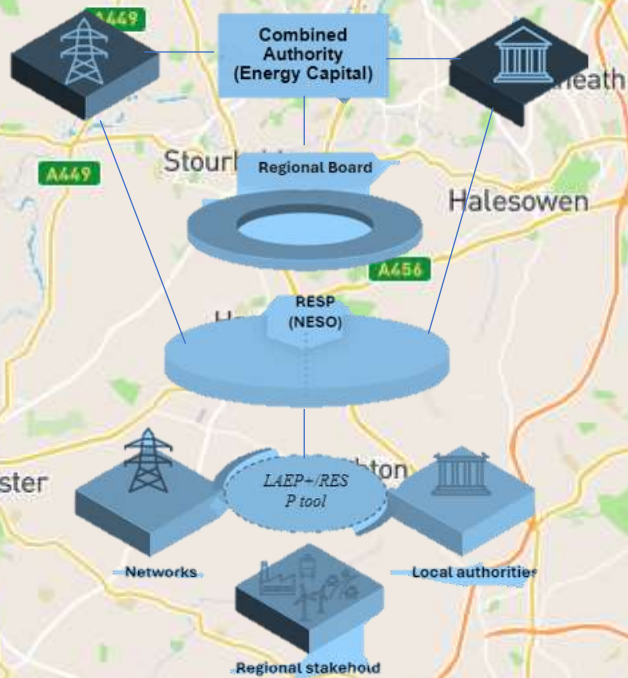


# A more strategic approach to planning energy infrastructure



## Enable

The West Midlands Combined Authority can support others to deliver





# Regional Energy Strategy

**Vision:** By 2041, the West Midlands will have trailblazed the route to a smarter UK energy system, creating prosperity for the region and enabling a fairer net zero transition for our communities.



Smart Spatial  
Planning



Local  
Flexibility



Co-located  
Clean  
Generation



Skilled  
Workforce and  
Supply Chain



Commercial  
and Financial  
Innovation

Policy Foundation



# PROGRAMME AREA 1: Local Area Energy Planning

- Digital LAEP SP through Project PRIDE, as still not a requirement on LAs
- Going beyond working with the DNO, to inputting to NESO's new Regional Energy Strategic Planning process to ensure the region's energy infrastructure needs will be met
  - Participate in working groups and the regional forum
  - Deliver the foundations for LAEPs across the wider West Midlands
- Supports planning of generation with demand – co-location pillar
- Supports delivery of new business models for development in grid constrained areas

## Project Pride

SIF innovation project 2024-2027  
Lead by NGED with Advanced Infrastructure (LAEP+ tool), Regen (Energy System specialists) and NESO

### Project Aims:

1.Unlock dynamic and integrated energy planning and investment. Development of the digital tool will enable local authorities to more easily develop cross-vector digital infrastructure plans, creating a live feedback loop between networks, local authorities and regional stakeholders to support integrated planning for the decarbonisation of major energy demands.

2.Demonstrate processes for local-regional information exchange and governance. Alpha established a new governance structure in the West Midlands Combined

Aut  
de  
re  
ge  
ag  
wi

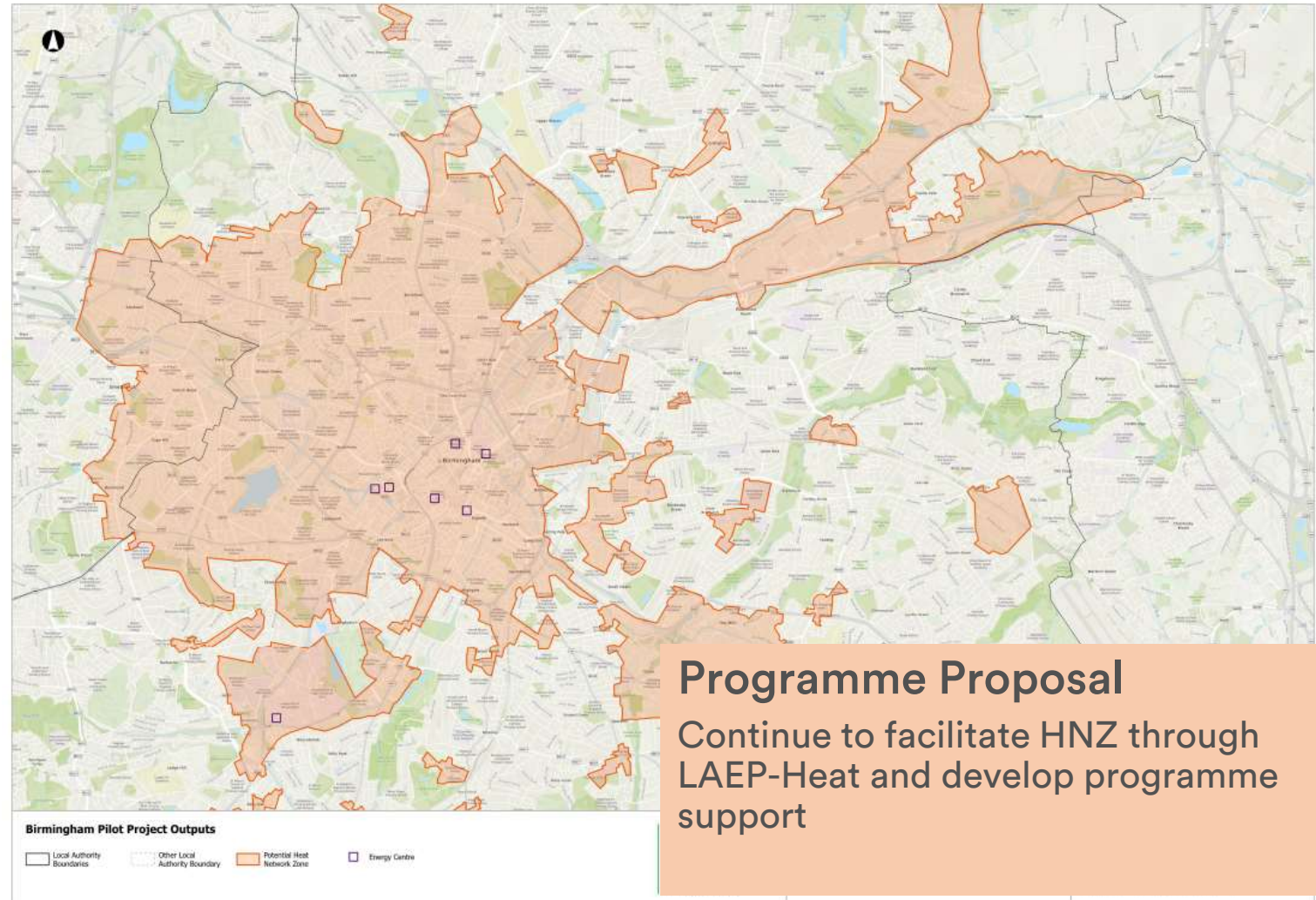
### Programme 2025/26

Continue to deliver PRIDE in 2025 with the aim of 10 LAEP style plans  
Recruit 2x new staff to support



# PROGRAMME AREA 2: Developing a heat decarbonisation programme

- Integration into LAEP programme for strategic whole system insights
- Regional collaboration through LAEP-Heat group
- Development of the programme to formalise role







# PROGRAMME AREA 3: Encouraging commercial retrofit



Regional assets	Policy environment
<ul style="list-style-type: none"> <li>• data from BEAS</li> <li>• WMGC on Strategic land mapping+</li> <li>• LAEP+ to steer investment opportunities</li> <li>• Third party offers of project development and funding for low carbon tech roll out such as SSE but these are often very centred on what SSE or others consider commercial viable i.e. large scale quick wins</li> <li>• Developing regional fund</li> </ul>	<ul style="list-style-type: none"> <li>• An opportunity to tie in community energy ownership to commercial roll out of renewables</li> <li>• Now Local Power Plans are coming and we are looking for a way to shape these to help us work out firstly what our offering is and then a</li> </ul> <p><b>Programme 2025/26</b></p> <p>Bring in external support to develop commercial energy programme Q4 2024</p> <p>Budget for delivery of that programme 2025/26</p>



# OTHER PROGRAMME SUPPORT: Industrial decarbonisation and the Black Country Industrial Cluster



Regional assets	Policy environment
<ul style="list-style-type: none"> <li>• data from BEAS (energy intensive audits)</li> <li>• Data from RePowering the Black Country*</li> <li>• Recommendations of IETF</li> <li>• LAEP+ to steer investment opportunities</li> <li>• Developing regional fund</li> </ul>	<ul style="list-style-type: none"> <li>• NESO focusing on industrial clusters to define national whole systems strategy – focus on W.Mids and South in late 2025</li> <li>• BEAS 2 confirmed</li> </ul>

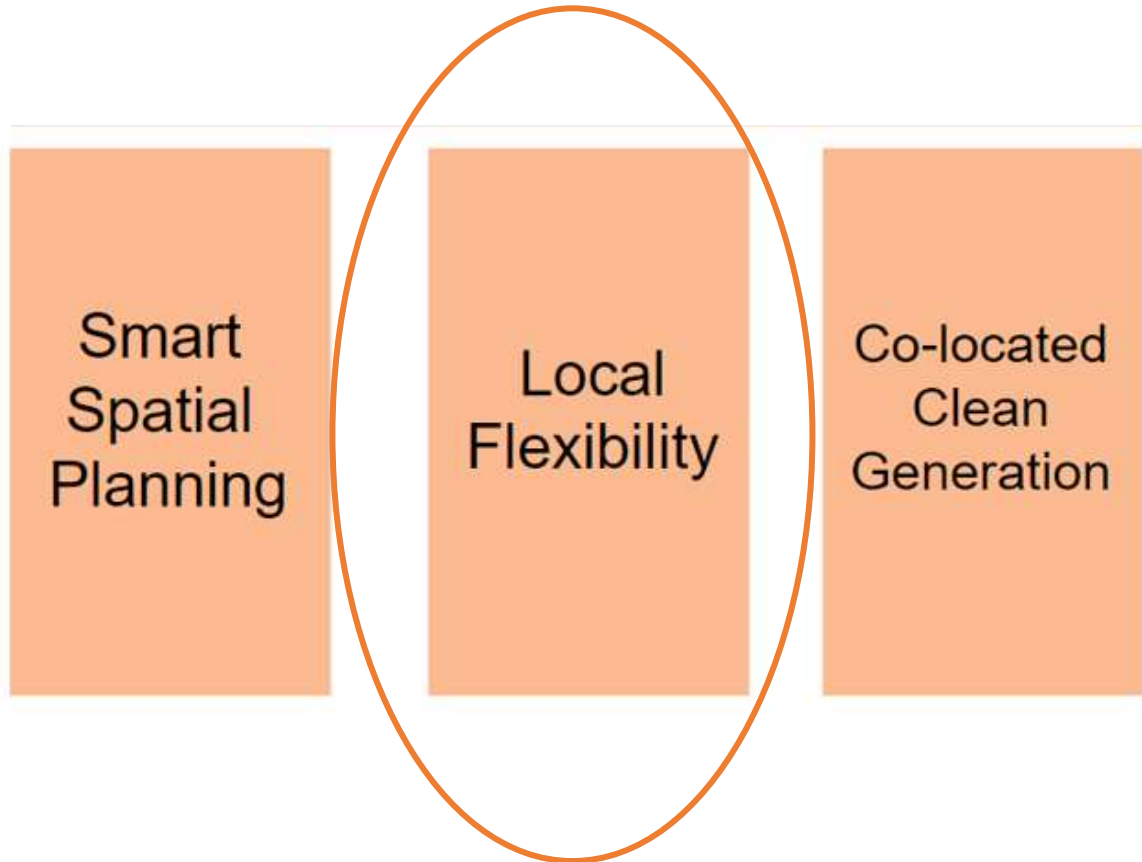
**Programme 2025/26**

Bring in external support to set up Industrial “customer group” to drive data into LAEP+

Work closely with economy team to integrate industrial energy support into wider business growth offer



# NEW PROGRAMME DEVELOPMENT: New housing development flexibility



Regional assets	Policy environment
<ul style="list-style-type: none"> <li>• Clear political mandate</li> <li>• LAEP+ to steer investment opportunities</li> <li>• Close working with LEMA</li> <li>• Close working relationship with NGED</li> <li>• Developing regional fund</li> </ul>	<ul style="list-style-type: none"> <li>• Strategic housing planning now sitting with CA</li> <li>• New regulatory changes (such as BSC modification P415) which will enable new market entrants</li> </ul>

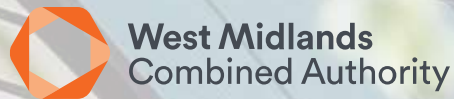
**Programme 2025/26**

Formalise housing “customer group” into LAEP governance

Look to develop a regional demonstrator of smart housing development

# Enabling Net Zero Homes and Communities

George Simms, Head of Net Zero Homes and Communities



**ENERGYCAPITAL**



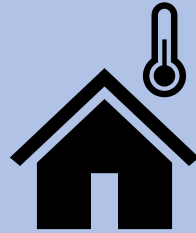




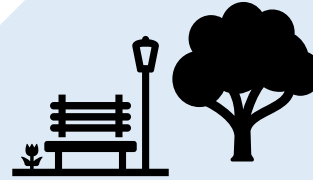


# Delivering Net Zero Neighbourhoods

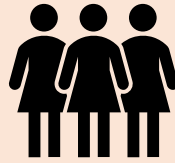
Comfortable energy efficient homes with affordable low carbon heating



Neighbourhood regeneration and green spaces



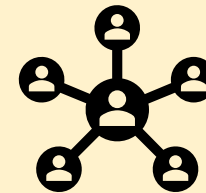
Community co-production & design



Low carbon mobility and active travel infrastructure



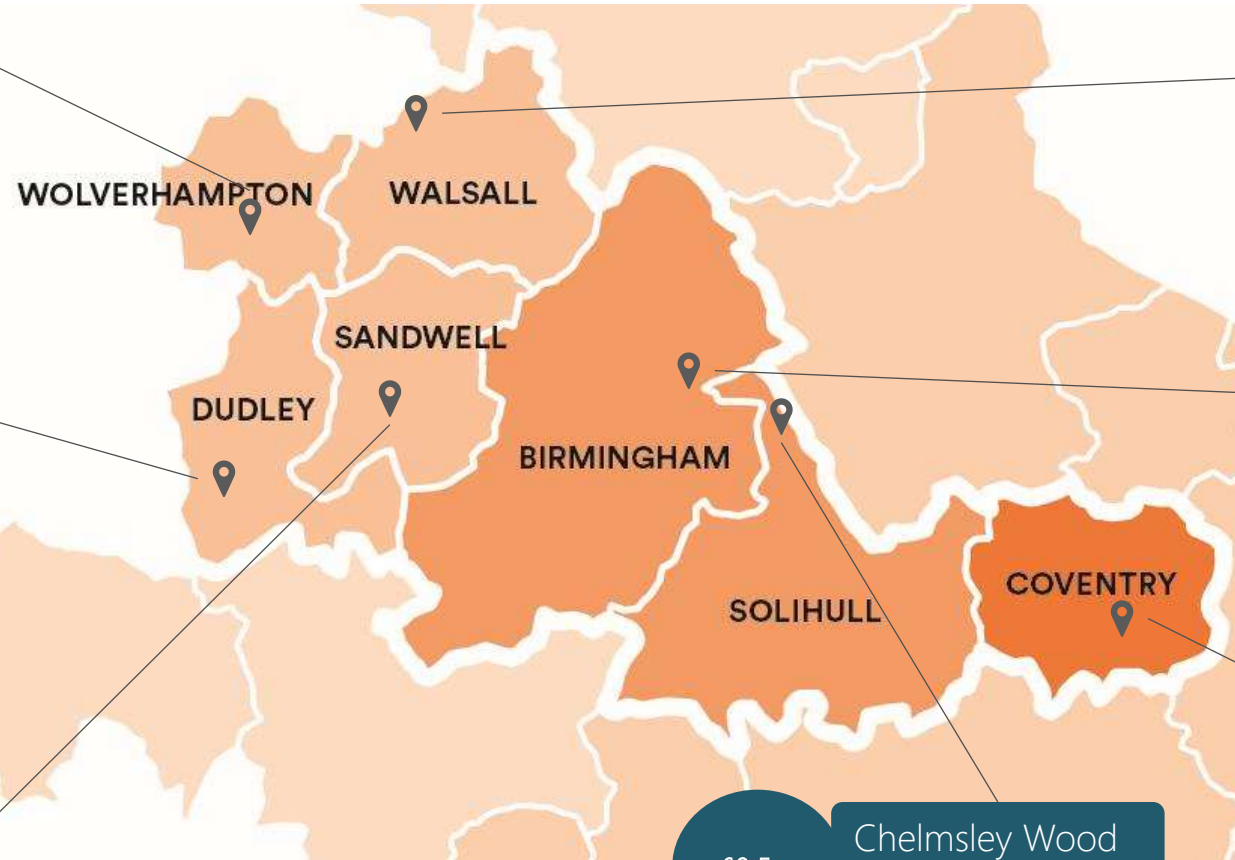
Community energy and climate resilience opportunities



# Our Net Zero Neighbourhood Cohort

£0.5m

Graiseley



Dudley Fields

£0.5m



£1.6m

Brockmoor



Castle Vale

£0.5m



£0.5m

Park Lane Estate



£0.5m

Chelmsley Wood



Hillfields

£0.5m



Funded by the  
WMCA and  
LNZA

# Continuing to innovate

- Supported by DESNZ
- We will continue working with our LAs on their net zero neighbourhoods
- We want to engage partners on measuring demonstrable outcomes, particularly in 'health, network management and carbon' resulting from energy project investments
- We want to work with you to bring forward a pipeline of local net zero projects and get them investment ready
- We want to support the market to develop here in the West Midlands
- Devolution will help us to do this



West Midlands  
Combined Authority

**ENERGY**  
**CAPITAL**



### **Deliver**

Lead on or work with others in the region to deliver carbon emissions reduction



### **Enable**

The West Midlands Combined Authority can support others to deliver



### **Influence**

Using the West Midlands Combined Authority to influence action by others indirectly

# Devolution - The Buildings Retrofit Pilot.

George Simms

# What is it?

- Agreed **three-year, £167m Retrofit Pilot** for homes and public buildings in WM
- Funding: April 2025 > March 2028 **3yrs**
- Opportunity to combine three separate funding sources to **shape funding around local needs**
- Grant funding **allocative for LAs and HAs**

The image shows the cover and contents page of a document titled "West Midlands Combined Authority Trailblazer deeper devolution deal". The cover page (left) features the HM Government logo, the West Midlands Combined Authority logo, and the title. Below the title is a small text block stating that the deal is subject to ratification by all partners and the delivery requirements set out in the document. The date "15 March 2023" is at the bottom. The contents page (right) lists various sections and their page numbers.

Contents	
Introduction	5
Summary of the deal	6
Background and context	8
Deal	10
Fiscal devolution	11
Levelling Up Deals	13
Single settlement	21
Transport	26
Housing and regeneration	27
SSAs	28
Equipment support	28
Investment	31
Business productivity	32
Tax and investment	33
Net zero and the environment	35
Digital	35
Skills and tourism	35
Public services reform	37
Peace for Growth	38



# Targets for primary outcomes

Outcome	Target	Further detail
Number of social homes upgraded to EPC C	12,300	<ul style="list-style-type: none"> <li>Some flexibility around tenure and starting EPC</li> </ul>
Number of low-income private homes upgraded to EPC C	1,700	<ul style="list-style-type: none"> <li>Some flexibility around tenure and starting EPC</li> </ul>
Bill savings from homes (£000/year)	2,878	<ul style="list-style-type: none"> <li>Savings can be deemed by using pre- and post-works EPCs, but other methods of determining savings (e.g. measured savings) can be considered</li> </ul>
Lifetime carbon reductions from homes (KtCO <sub>2</sub> )	369	<ul style="list-style-type: none"> <li>Assumes 35-year lifetime</li> <li>Savings can be deemed by using pre- and post-works EPCs, but other methods of determining savings (e.g. measured savings) can be considered</li> </ul>
Annual carbon emissions reductions from public buildings (KtCO <sub>2</sub> )	3.6	<ul style="list-style-type: none"> <li>Assumes an average project lifetime of 22 years</li> </ul>

- Subject to review in Q3 25-6, based on project pipeline
- No targets set for secondary indicators (health, jobs etc)

# What's not different?

- Scope of activity and measures broadly the same – retrofit of homes and public sector buildings
- Delivery led by local authorities, housing associations and other public sector organisations
- Quality assurance standards (e.g. PAS 2035) still apply

# What is different?

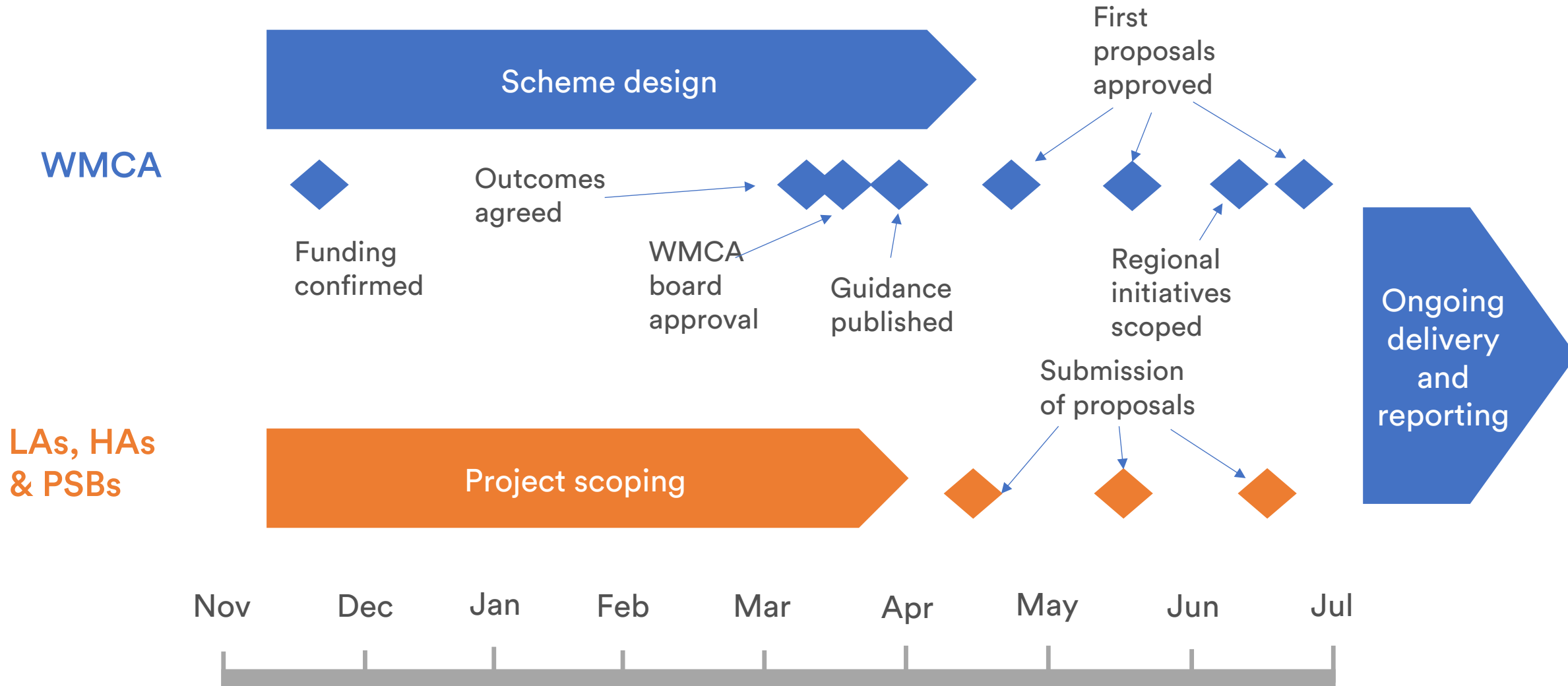
1. First time government has put trust in combined authorities to shape delivery – WMCA takes on role of DESNZ
2. Additional flexibility in delivery – treat three funding sources as one to better enable place-based approaches (e.g. NZN)
3. Develop relationships and collaboration across the region to enable a pragmatic approach - strike the right balance between meeting targets and recognising real world constraints
4. Activity at regional level will enable innovation and capacity building, and create wider opportunities for market growth and investment (e.g. funded solar, willing to pay households)
5. Create opportunities for the programme to have a greater impact than the sum of its parts

# Next steps



West Midlands  
Combined Authority

**ENERGY**  
CAPITAL





# Get in touch:

- For more information, please use our website: [The Building Retrofit Pilot](#)
- For questions, submitting information or anything else, please email: [Devolved.Retrofit@WMCA.org.uk](mailto:Devolved.Retrofit@WMCA.org.uk)



# Scaling up Retrofit

## Rob Johnson, Head of Delivery



**ENERGYCAPITAL**



# Devolved Retrofit Pilot

## Legal timescale update:

- Legal Information to stakeholders:
- Letter of Intent (LOI) issue to stakeholders by w/c 17th March 2025
- Draft Grant Funding Agreements (GFA) by 30th March 2025 (inc. Subsidy control)
- Data Sharing Agreement (DSA) by 30th March 2025
- Managed support Service agreements (as required by individual stakeholders)

# Grant application process

## Approval stage 1

- Initial expression of interest (EOI) to be submitted at Project Development stage in the form of a Development Plan
- EOI will be evaluated by the WMCA HUB who may request either further information or approve for release of Development funding

## Approval stage 2

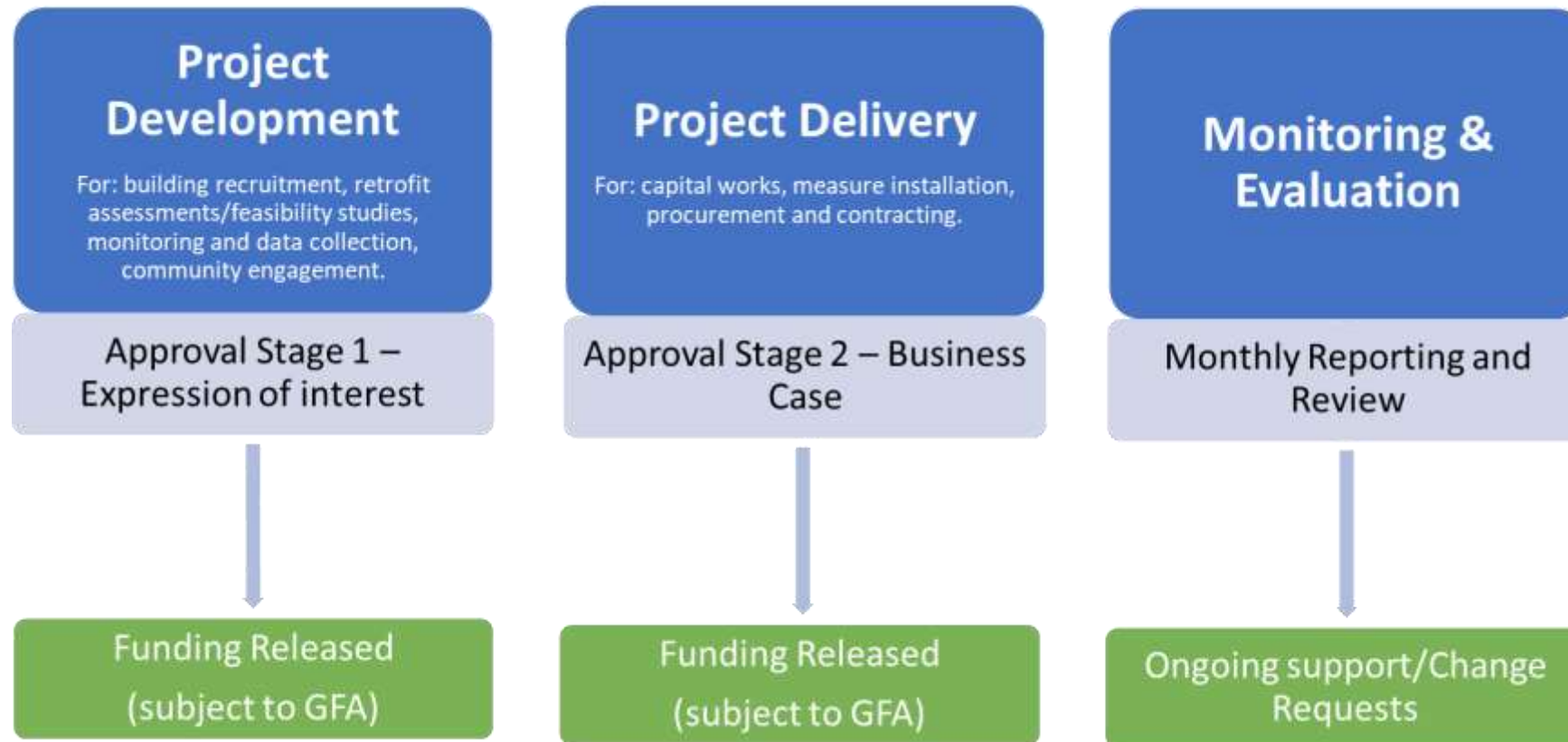
- Following approval of stage 1, a further application will be submitted as a detailed business case including capital works, works measures, procurement and contracting
- The business case will be evaluated by the WMCA HUB who may request either further information or approve for release of capital funding



# Reporting process

- Stakeholders to provide monthly reports incorporating :
- Financial forecasting against baseline/Risk
- Set KPIs & Social value performance
- Grant spend monitoring
- Compliant properties
- Compliant Energy Efficient Measures (EEM)
- Tenant Privacy Notices
- Monthly monitoring meetings with designated Single Point of Contact ( SPOC )
- Performance will be assessed and RAG rated accordingly
- Determine any additional level of support required by stakeholders
- Review programme changes leading to a Project Change Request (PCR)

# Approval stages

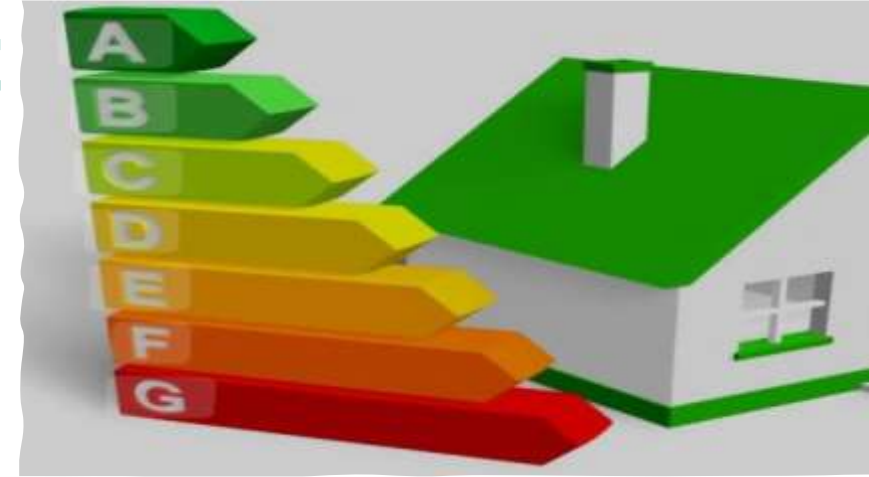


# WMCA Managed Support & Challenges

- PAS 2035 Accredited Assessors
- Accredited Coordinators
- Full PAS Design compliancy
- Full range of technical enabling services
- Planning advice and guidance
- Procurement DPS support including forms of contract appointment
- Quality Assurance checks for compliancy and handover process
- Customer Journey process
- VAT Advice and guidance
- Inaccurate property Data
- Lack of tenant/resident engagement
- Poor utilisation of average cost caps across the delivery programme to ensure better measures
- Structured procurement process to ensure better VFM and speed of mobilisation
- Incorporate "harder to treat " properties
- Compliance with PAS 2035: 2023 & 2038

# Delivery team Managed Support

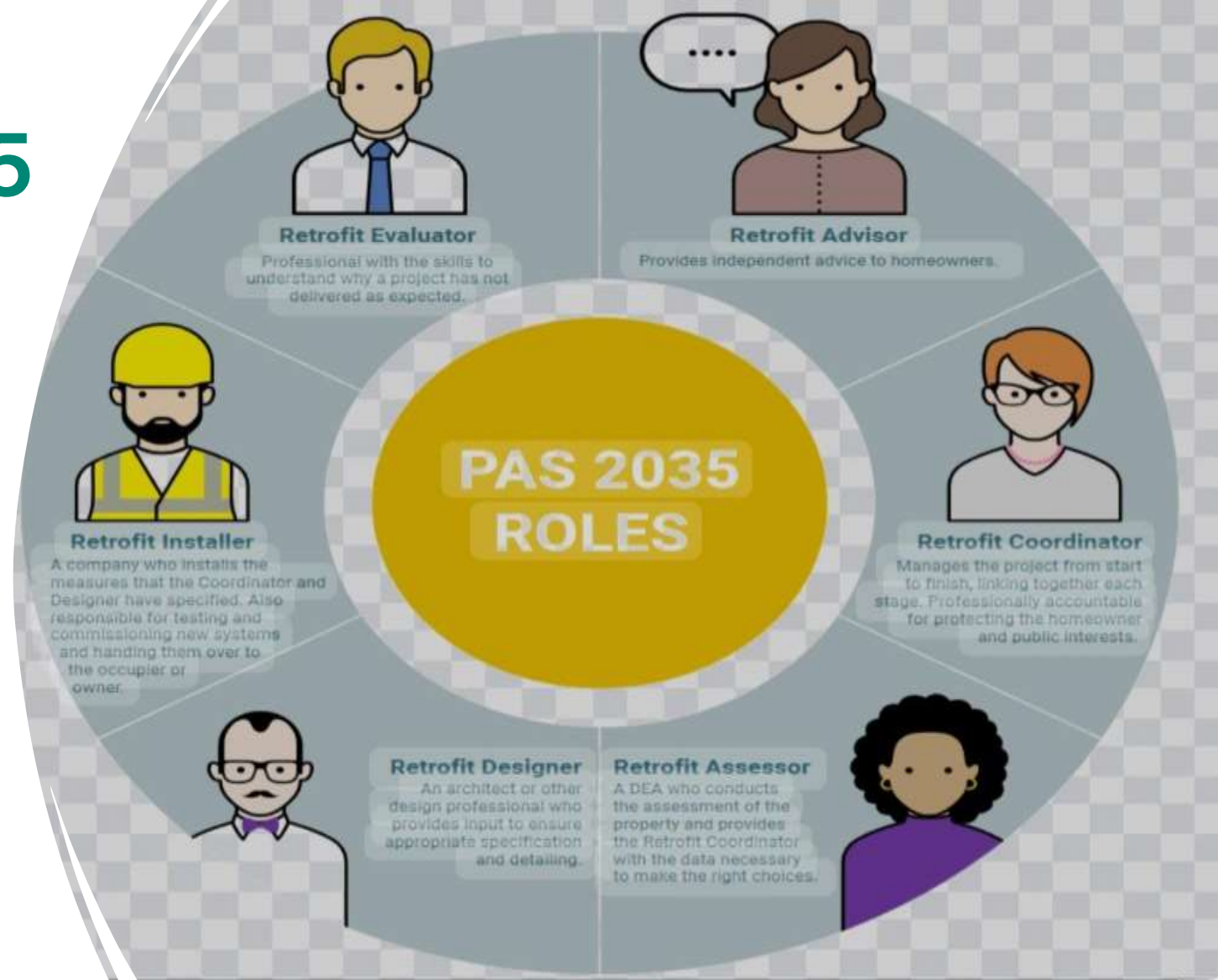
- Based upon Lessons Learnt, the Energy Capital/WMCA delivery team structured a Managed Support facility for SHDF for those RPs and LAs who lacked the resource and knowledge to enable delivery of a successful compliant programme.
- Following the success of this process we are increasing the support available to all stakeholders as part of the Devolved Retrofit Pilot programme.
- This will allow:
  - All applicants to utilise the professional support available to ensure they achieve a structured approach to their individual programme
  - Support from pre grant application stage through to final delivery & lodgment ,ensuring full compliancy
  - Energy Capital & WMCA to realise the aims and objectives of the commitment to Devolution
  - Energy Capital being recongised as a market leader throughout the sector





# Managed PAS 2035 Retrofit Support

- PAS 2035 Technical support:
- Fully accredited Retrofit Coordinators
- Fully accredited Retrofit Assessors
- Project Coordinator/evaluator
- Retrofit Technical advisor PAS 2038 Public buildings
- Accredited Designers
- Lodgements



# Project Management & Procurement Support

- APM/RICS Accredited Project Managers
- Preparation of Project Development Plans
- Monitoring of Project Milestones/KPIs
- Monitoring of PAS 2035 process in conjunction with Project Coordinator
- Coordination of Project meetings
- Assistance with Procurement through DPS



# Procurement Support

- Fully compliant competitive tender process through WMCA/Procure Plus DPS
- Compilation of ITT
- PAS 2035 fully compliant specification
- Tender evaluation guidance
- Full tender cost analysis
- Contract documentation i.e. JCT Measured term etc
- Collateral Warranties



# Project Management – Evaluation

- Ensure monitoring of required reporting process and compliance
- Monitoring of grant forecasting against projected programme
- Evaluation of installer/contractor's payments and certification
- Evaluation of project risks and monitor Risk Register
- Monitor progress tracker in conjunction with Installer/Contractors programme and projected capital works measures





# Communication and knowledge sharing

- Networking and sharing knowledge is paramount to establishing a successful collaboration, from April 2025, we are holding bi-monthly Retrofit networking events on Thursdays at Primitivo Bar & Eatery, Barwick Street, Birmingham (by Snow Hill station)
- Further details will be emailed in due course

# Get in touch:

- For more information, please use our website: [The Building Retrofit Pilot](#)
- For questions, submitting information or anything else, please email: [Devolved.Retrofit@WMCA.org.uk](mailto:Devolved.Retrofit@WMCA.org.uk)





# Policy Panel



West Midlands  
Combined Authority

**ENERGYCAPITAL**

---

WEST MIDLANDS  
Greener Together 

# Energy Capital's role

**Deliver**



**Enable**



**Influence**



Shaping policy is a core aspect of all these functions



# Clean Power 2030 Mission

£40 billion  
annual  
investment  
required

## GB Energy

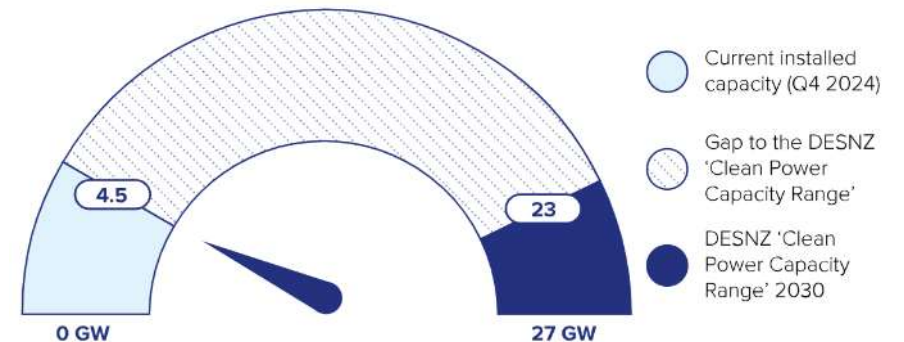
## Low Carbon Flexibility Roadmap

8GW of local and  
community-owned  
energy

£400m community  
energy loans, £600m  
local authority grants

## Electricity market reform (REMA)

### CP2030 Battery storage requirement



## Warm Homes Plan

- £167m Devolved Retrofit Pilot

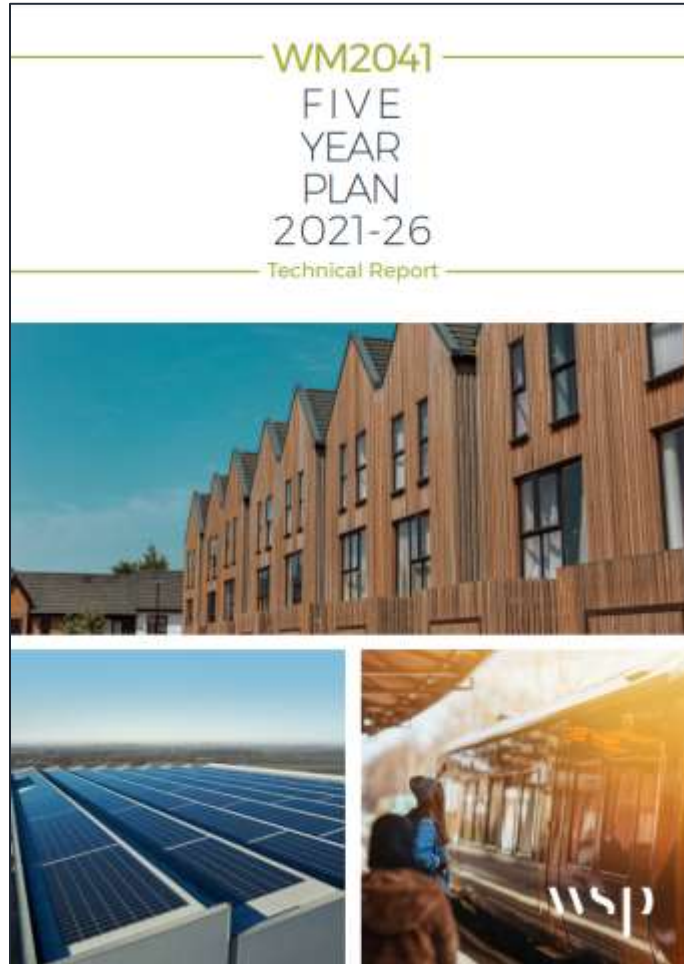
## Heat Network Zoning

- Pilots in Birmingham and Coventry

## Regional Energy Strategic Planning

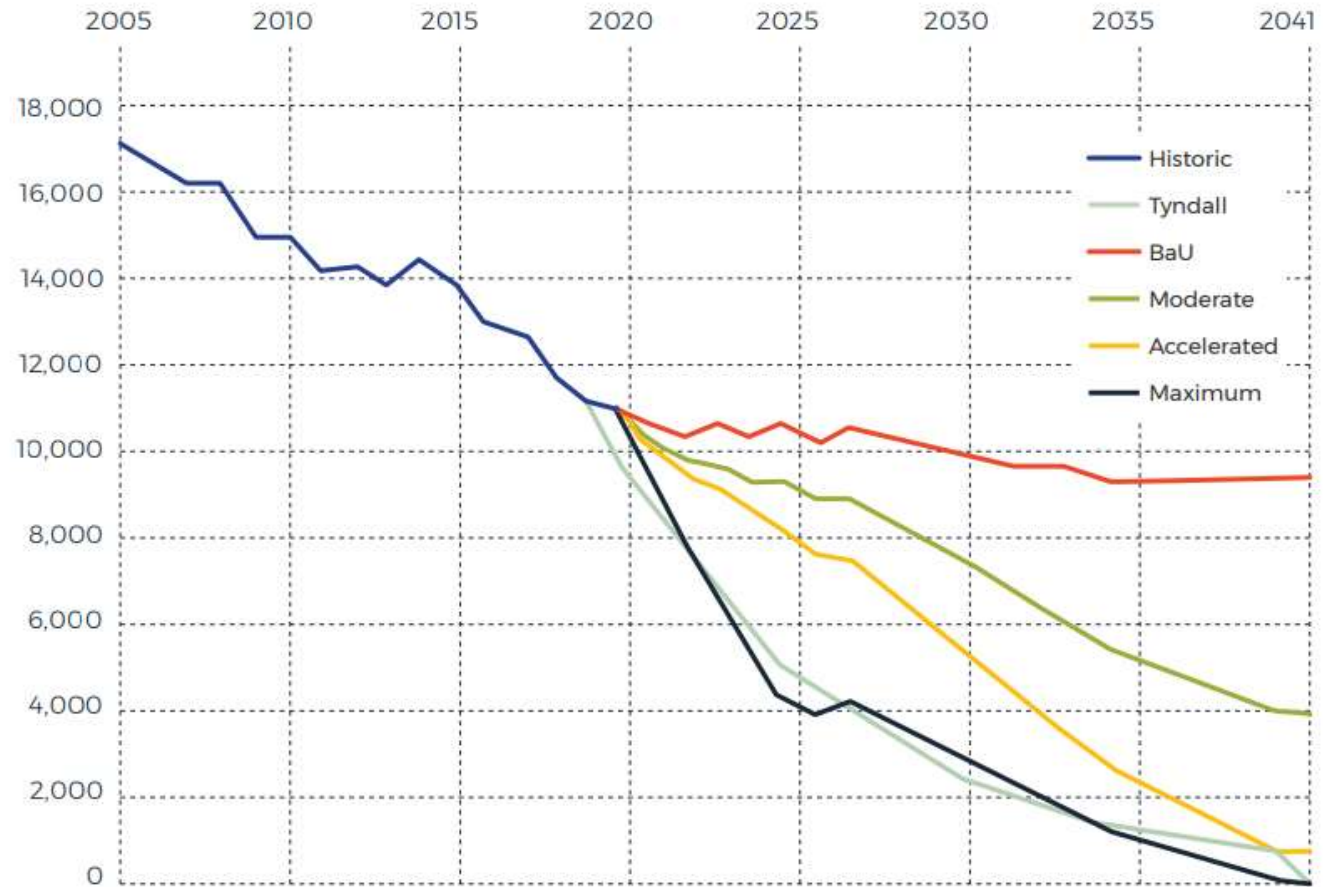
- Regional Energy Vision
- Regional Pathways
- Spatial System Need
- Network Plan Technical Coordination
- Regional Geospatial Energy Plan
- Societal Impact Assessment

# West Midlands Net Zero Policy

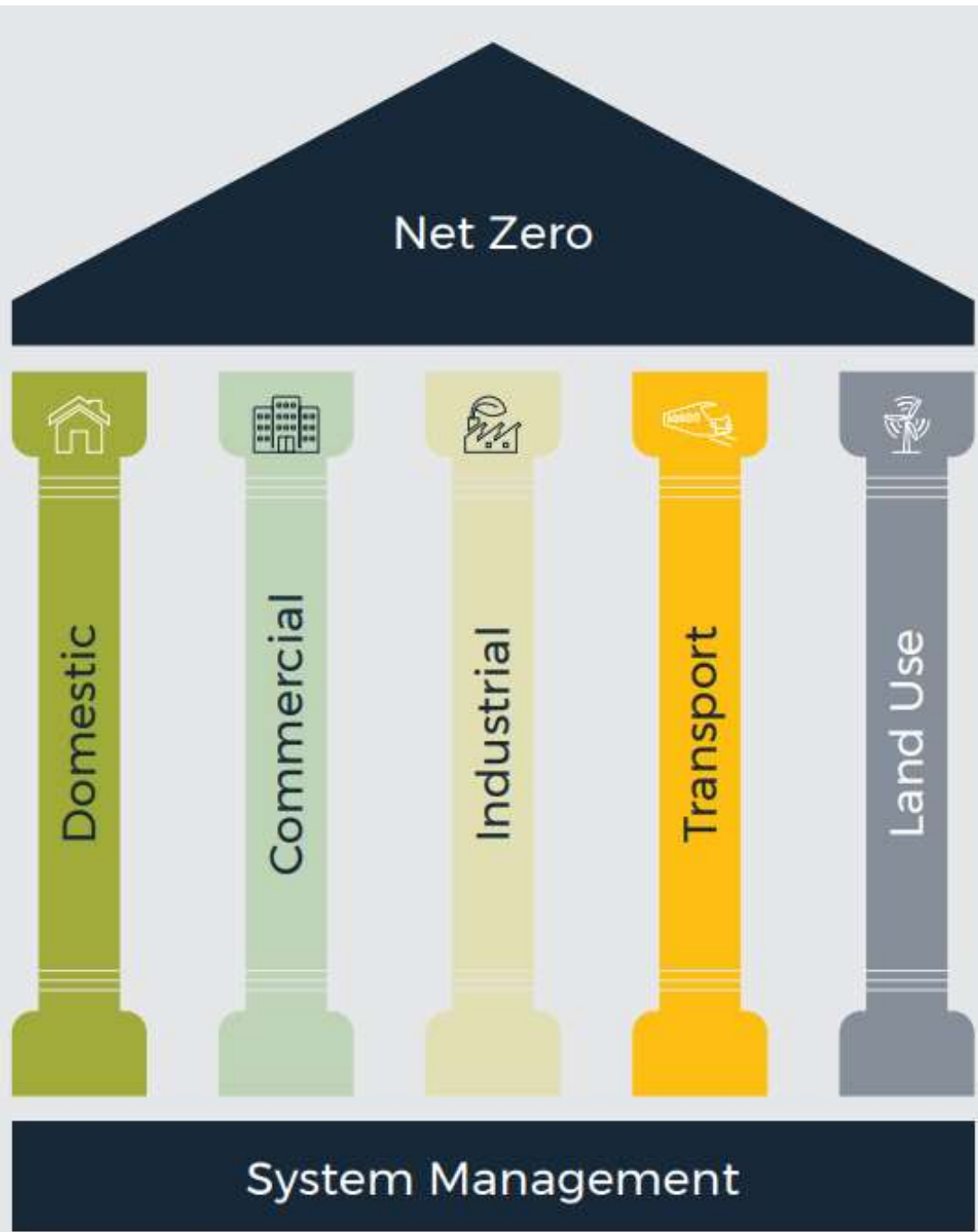


Five Year Plan 2021-26  
Net zero by 2041

Historic and Projected (Inc. Actions) vs. Budgeted GHG Emissions



Five Year Plan emissions pathways (Accelerated scenario recommended)

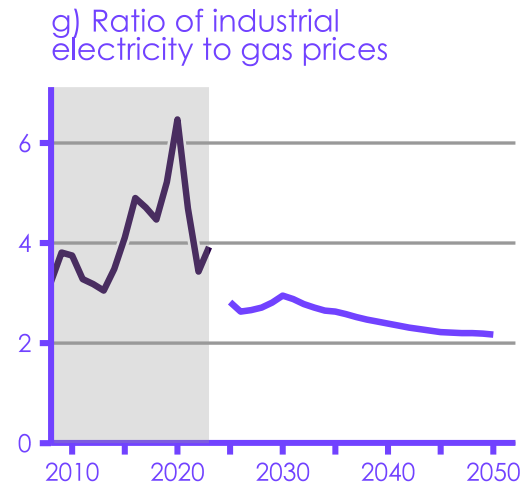
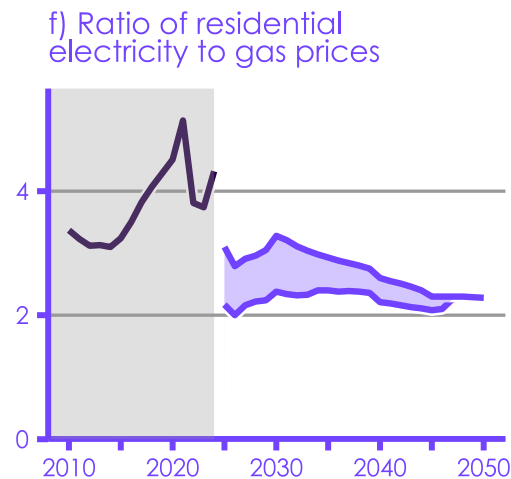
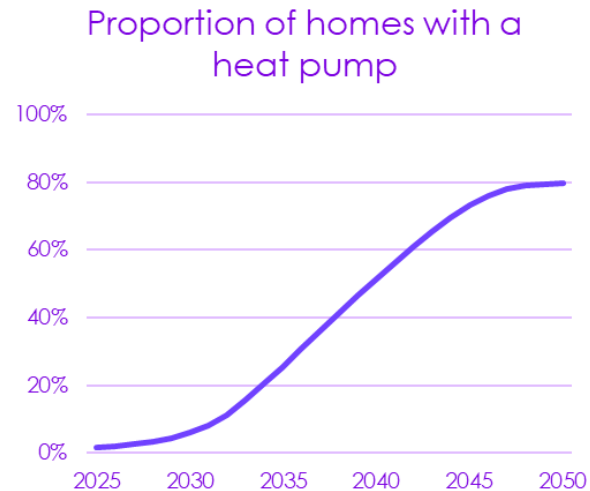


		2021	2026
Domestic	Energy efficiency	Energy efficiency in 25% dwellings	
	Heating retrofit	Low carbon heating system retrofit in 292,000 dwellings	
	Solar PV	415 MWp of rooftop solar	
Commercial	Energy efficiency	Energy efficiency in 50% buildings	
	Heating retrofit	Low-carbon heating system retrofit in 18,000	
	Solar PV	350 MWp of rooftop solar	
Industrial	Energy efficiency and heating retrofit	4% deployment of H2 and 5% of CCS for High Temp process, 2.5% energy efficiency, 25% electrification for LT processes	
	Solar PV	48 MWp of PV	
Transport	Avoid	9% of people tele-commuting 50% of time, 6% less personal and retail trips	
	Shift	Bike increase to 5% of trips, Car decrease to less than 60%	
	Improve	50% of taxis, buses and 25% of HGVs	
Natural Capital	Renewables	30 MW Wind and 225 MWp of solar PV	
	Natural capital	Tree coverage in 3% of WMCA area, and 5% of peri-urban area	
Systems Management		Upgrade and manage coordination across the energy associated systems (transport, digital)	

# Climate Change Committee – 7<sup>th</sup> Carbon Budget

“Electric options are now the clear choice in many areas of surface transport, buildings, and industry”

“... we see no role for hydrogen in buildings heating and only a very niche, if any, role in surface transport”





# Collaboration Days and workstream specific engagement

- Last year's events helped to shape the Strategy that has just been [endorsed by the WMCA](#)
- All events over the next 12 months are listed on our website [wmca.org.uk/what-we-do/energy-capital/partnerships](https://wmca.org.uk/what-we-do/energy-capital/partnerships)
- These will be a combination of themed presentations, networking and co-working
- Also workstream specific engagement





# Lunch 12:15

## Afternoon Deep Dive Sessions start at 13:15

Devolved Retrofit Pilot	Place-based Net Zero	Energy Infrastructure
Kingston Theatre	Lodge 1, 2 and 3	Telford